



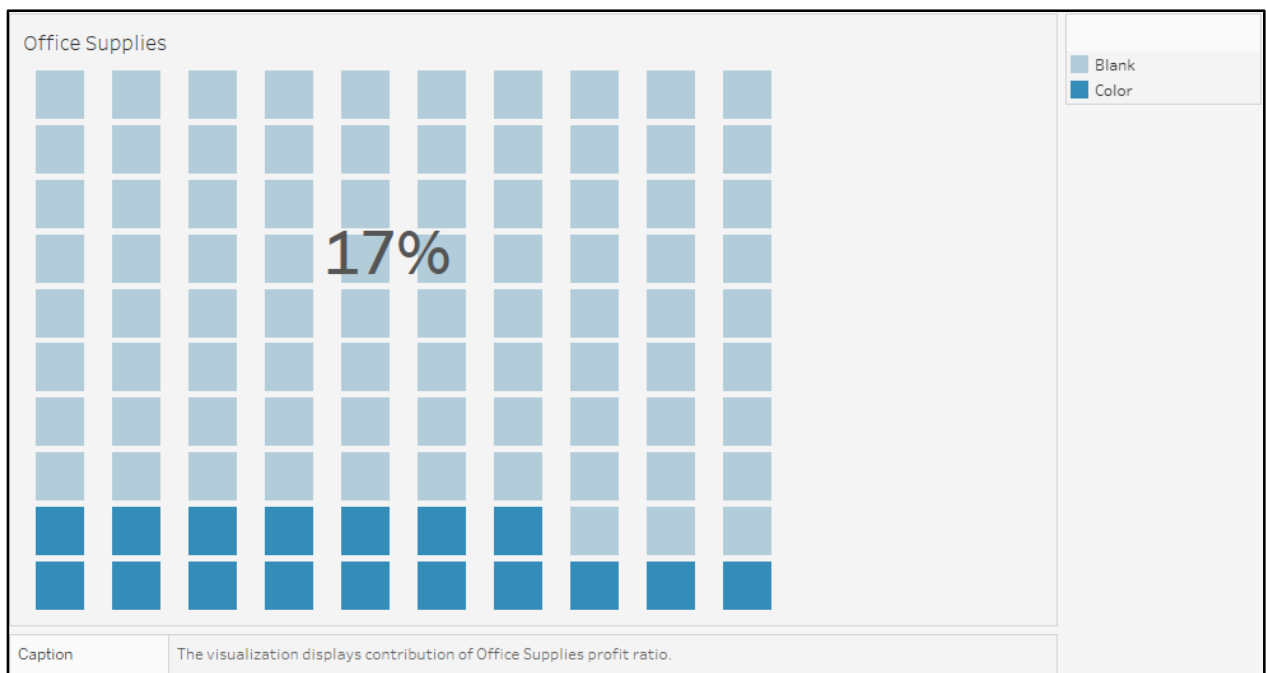
WAFFLE CHART

Chartbusters

WAFFLE CHART

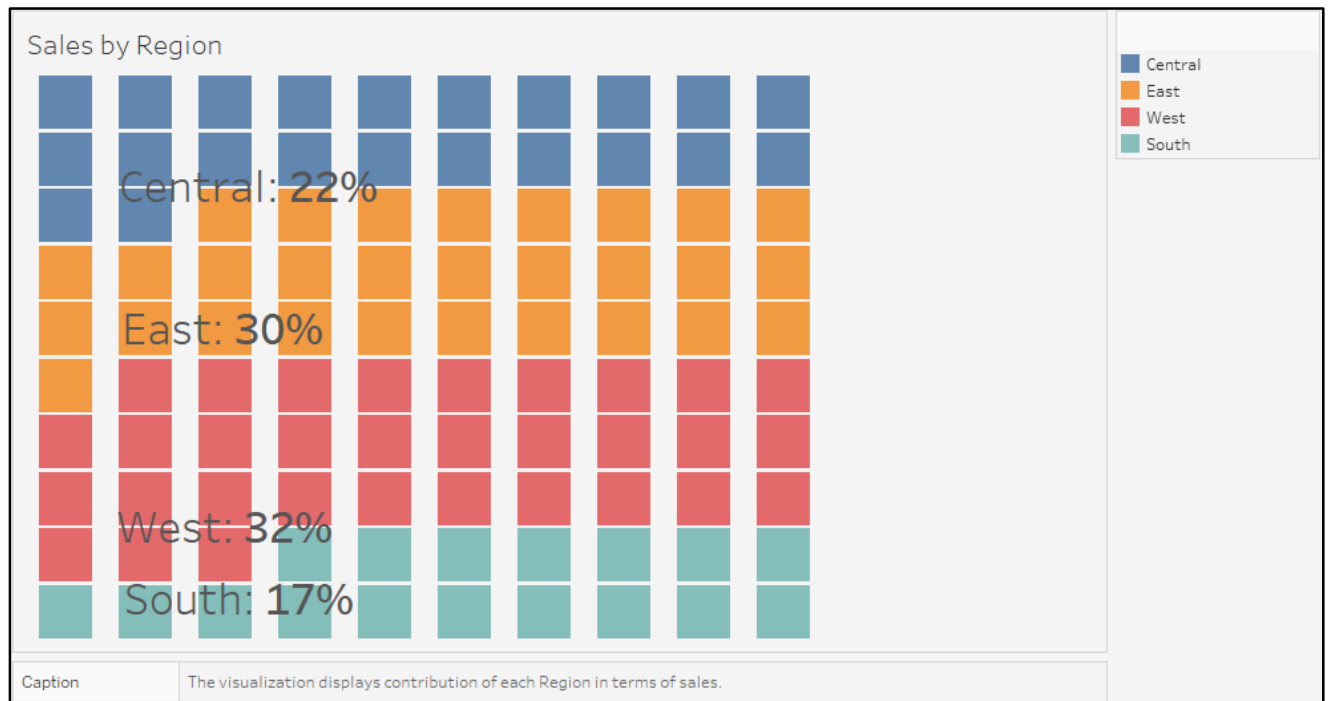
Waffle charts are a great way to display 0-100% KPI attainment. It displays parts-to-whole contribution very well. Waffle charts are similar to the donut or pie chart. Since it does not involve angles, one can easily and accurately compare KPIs attainment.

Sample Waffle Chart created in Tableau.



A Waffle chart is a matrix of 10x10. The value is displayed in terms of percentage and can be only used with one metric.

Here is another example of a Waffle Chart.



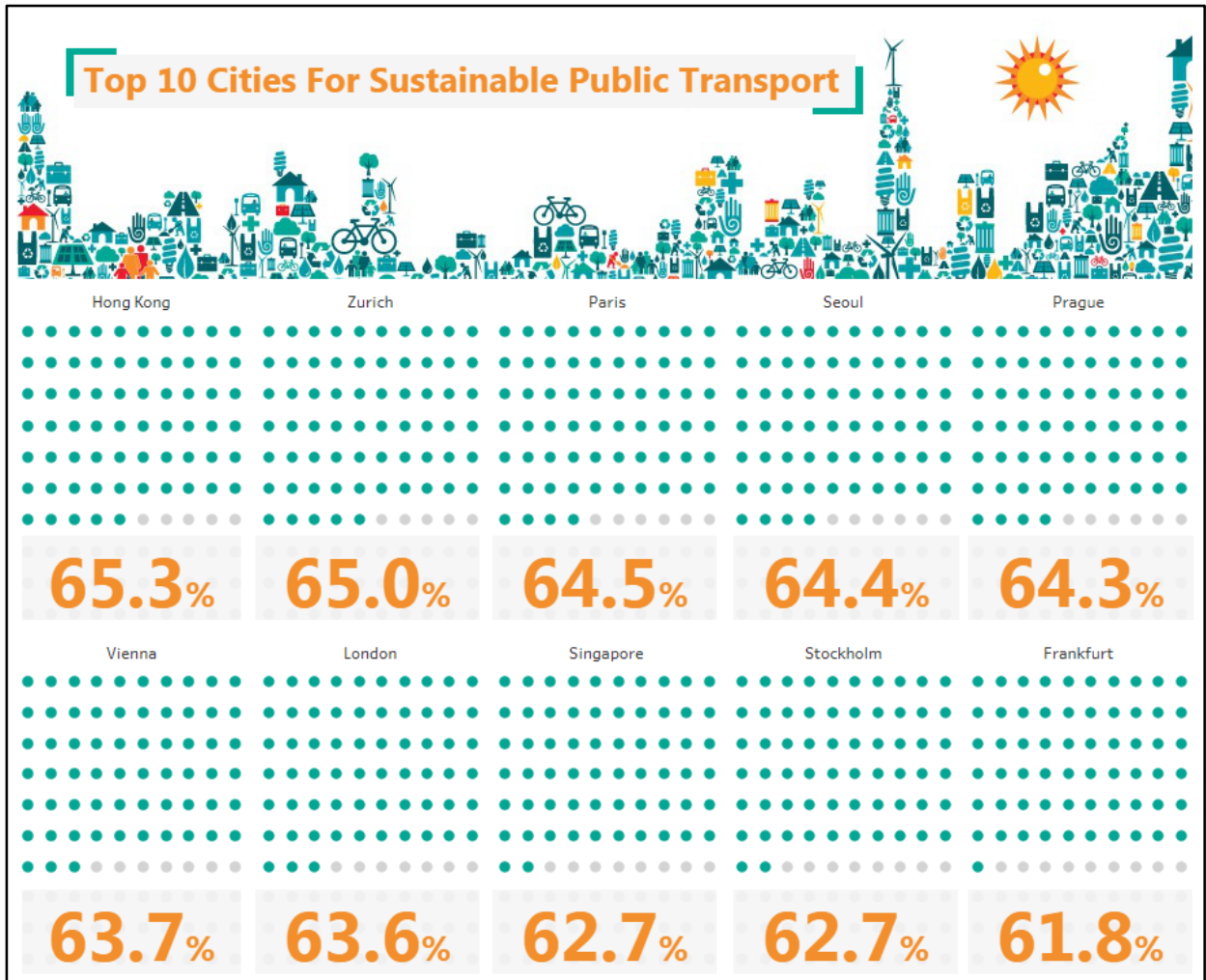
When to use this chart?

- When you are interested in comparing different categories or viewing their contribution to whole.
- When you want to place increased emphasis on the part of the whole
- When you want to display metrics as percentage of total.

When not to use this chart?

- If your data contains many values that are contributing to whole.
- If a metric you are interested in could exceed 100%.
- If you want to display percentages in terms of fraction.

Here is an example of small multiple waffle charts.



References:

<https://www.tableau.com/about/blog/2017/4/viz-variety-show-precise-waffle-charts-68462>

<https://powerbi.microsoft.com/en-us/blog/visual-awesomeness-unlocked-waffle-chart/>